



GT-LD10

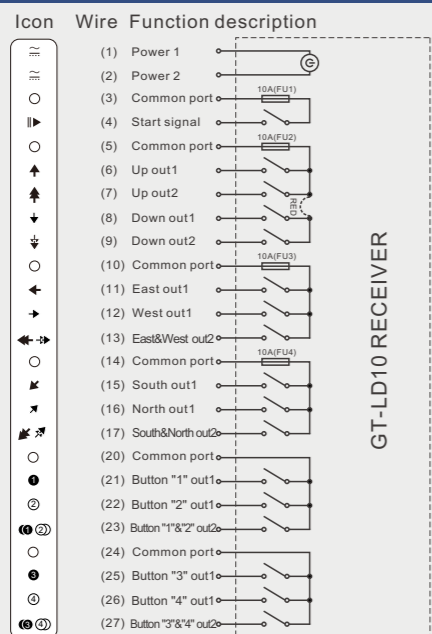
10 Double-speed buttons 17 Relays output

The transmitter is composed of 10 double-step buttons with excellent hand feeling, 1 rotary key switch (can be pulled out to prevent unauthorized operation) and 1 mushroom head knob emergency stop (command switch). As the user's need, the 10 double-step buttons can be preset to inching, self-locking and on-off modes. The surface patterns of the buttons can be customized to meet the individual requirements.

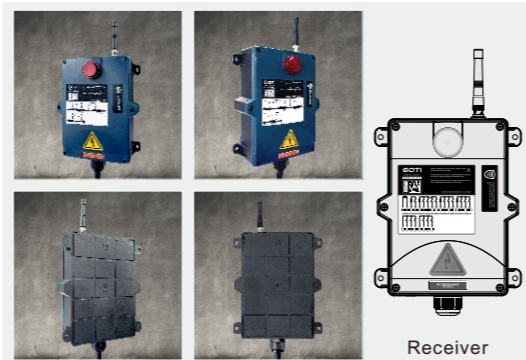
The LED indicator on the transmitter can not only show the current working status of the transmitter, but also display the battery status intuitively through the low battery monitoring function designed by the system. When the battery voltage is lower than 2.3V, the LED indicator lights up to indicate the battery needs to be replaced which make sure the equipment works safely and reliably. In addition, the transmitter uses low-power processing, which avoids the low efficiency of the equipment due to the user replacing the battery too often.

The receiver uses a wide power supply design (18-65V and 65-440V), almost covers all operating voltages in any circumstances. There is a 4cm high-brightness LED light in the receiver, even if working outdoor, the working status of remote control can be also checked clearly 100 meters away.

Wiring diagram



Transmitter



Receiver

Technical Parameters

Material	Glass-Fiber PA
Frequency range	UHF: 430~450MHz
Transmitter radio power	≤10dBm
Receiver sensitivity	-110dBm
Safety code	32 bits(4.3billion)
Control distance	≤100 meters
Transmitter power supply	2*AA batteries(DC3V)
Receiver power supply	AC/DC18-65V and 65-440V
Relay contact rating	8A/250V
Cable length	1.5 meters
Temperature range	-20°C~+85°C
Ingress Protection	IP65
Transmitter size	202*62*46mm (L*W*H)
Receiver size	267*192*94mm (L*W*H)

The content of this product manual shall be subject to the latest information of our technical department. If you need the latest information, please contact our staff directly. GOTI reserves the right of final interpretation.

Function Modification Software for PC



Data line

General accessories and peripheral products



Transmitter Silicone Sheath

Function modification data line

High gain extension antenna

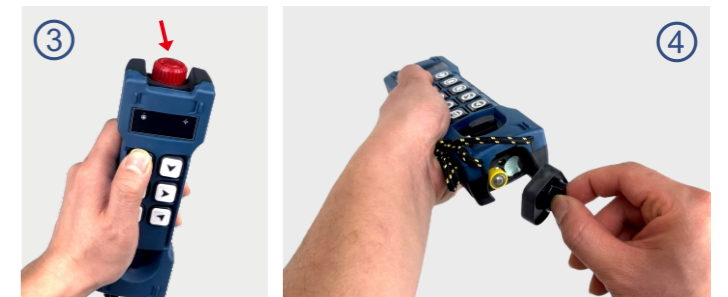
Quickly match codes and channel diagrams



1

2

- Remove the battery and wait for about 10s, do next step after the power running out completely.
- Cut off the power supply of the receiver to avoid someone else to use it.



3

4

- Press the switch "Emergency Stop" to make it in the action status; And then press the button "UP" without release.
- Install the battery and then put back the battery cover. Release the button "UP" when the 【Prohibition Light】 flashing red slowly.



5

6

- Connect the power cord of the receiver to the working power supply.
- Press the button "UP" again, when the 【Prohibition Light】 stop flashing means the match operation complete.

The content of this product manual shall be subject to the latest information of our technical department. If you need the latest information, please contact our staff directly. GOTI reserves the right of final interpretation.